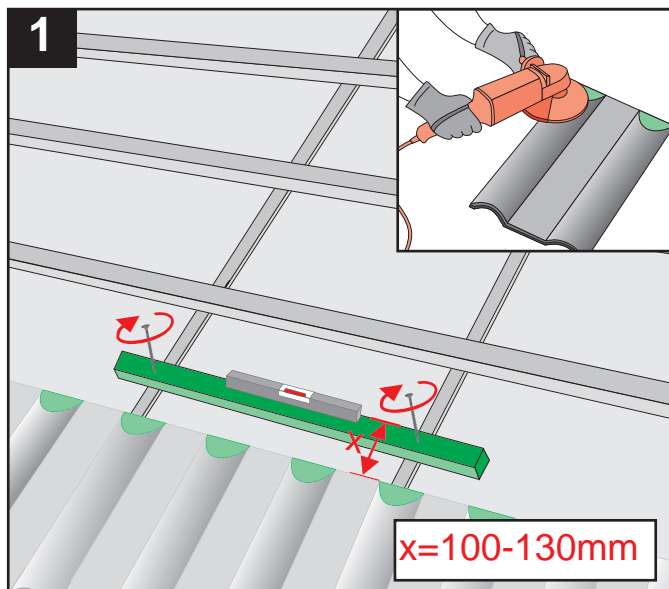
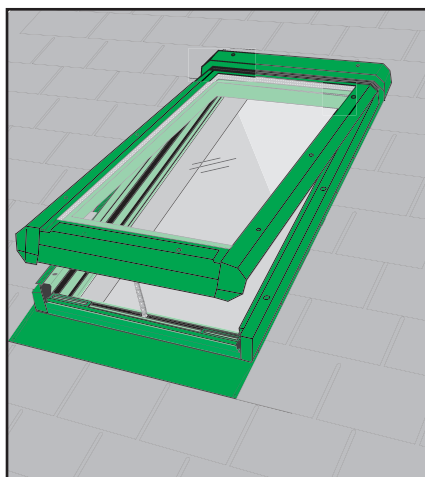
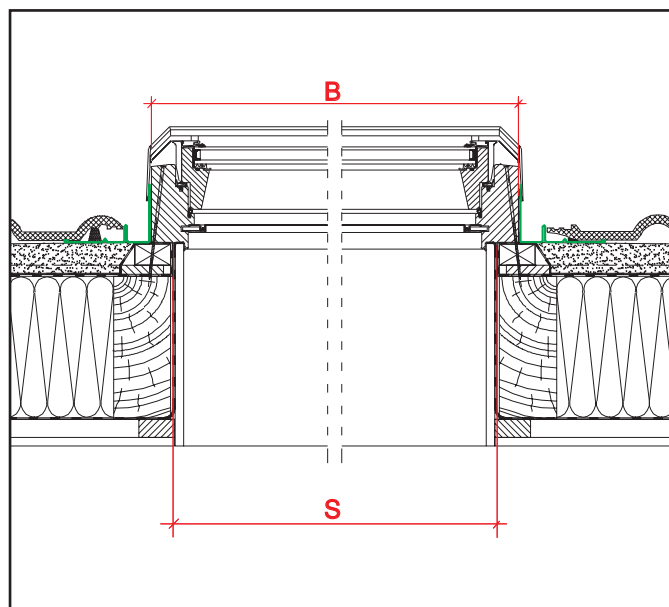
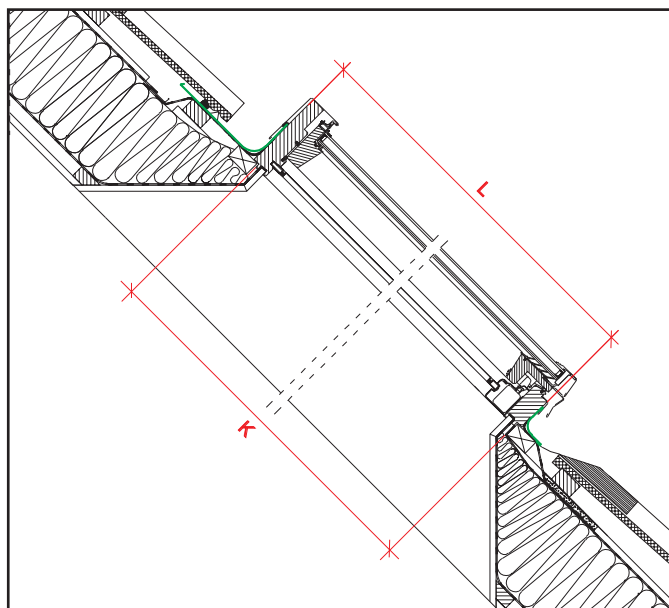
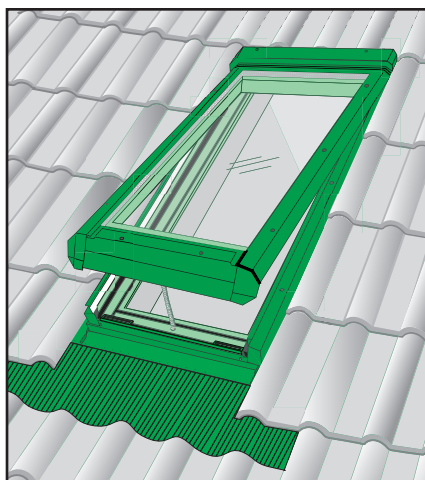
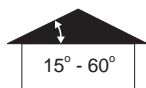
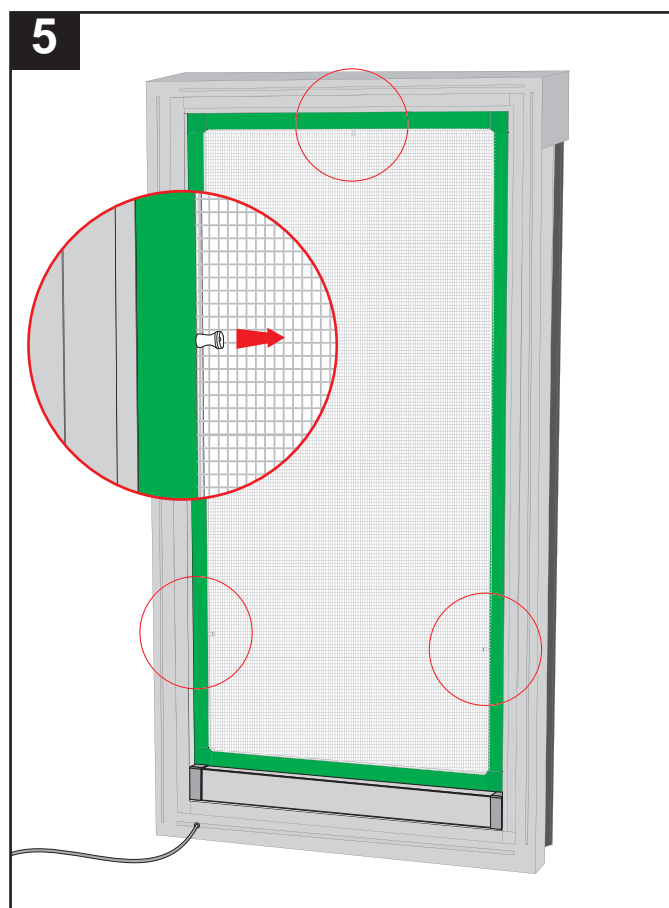
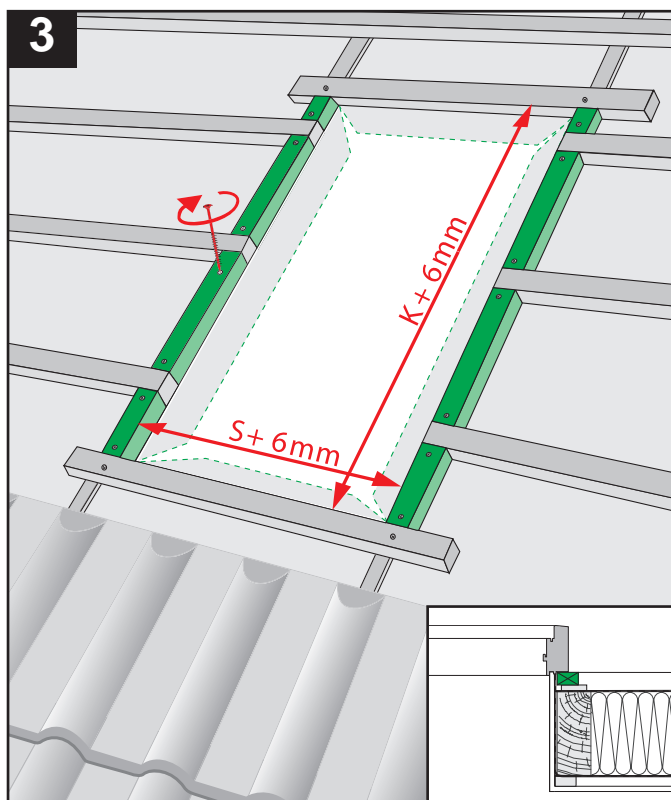
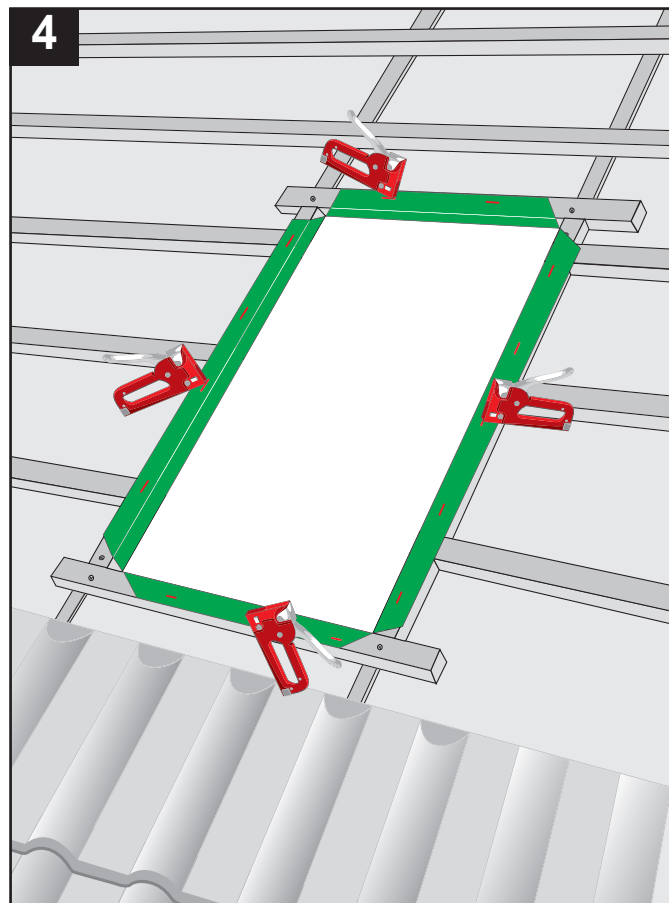
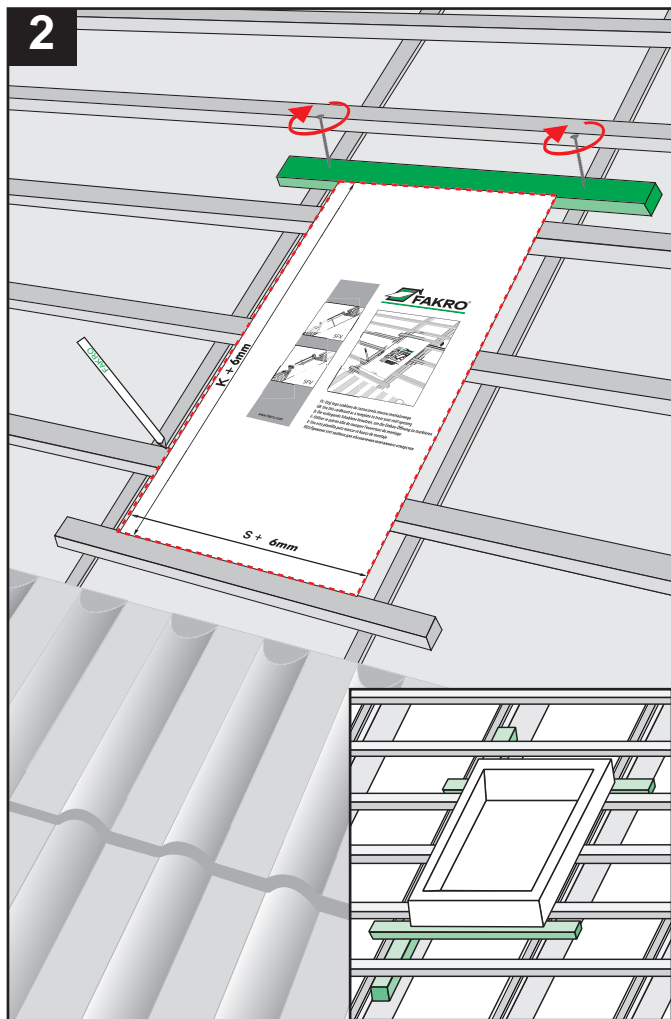
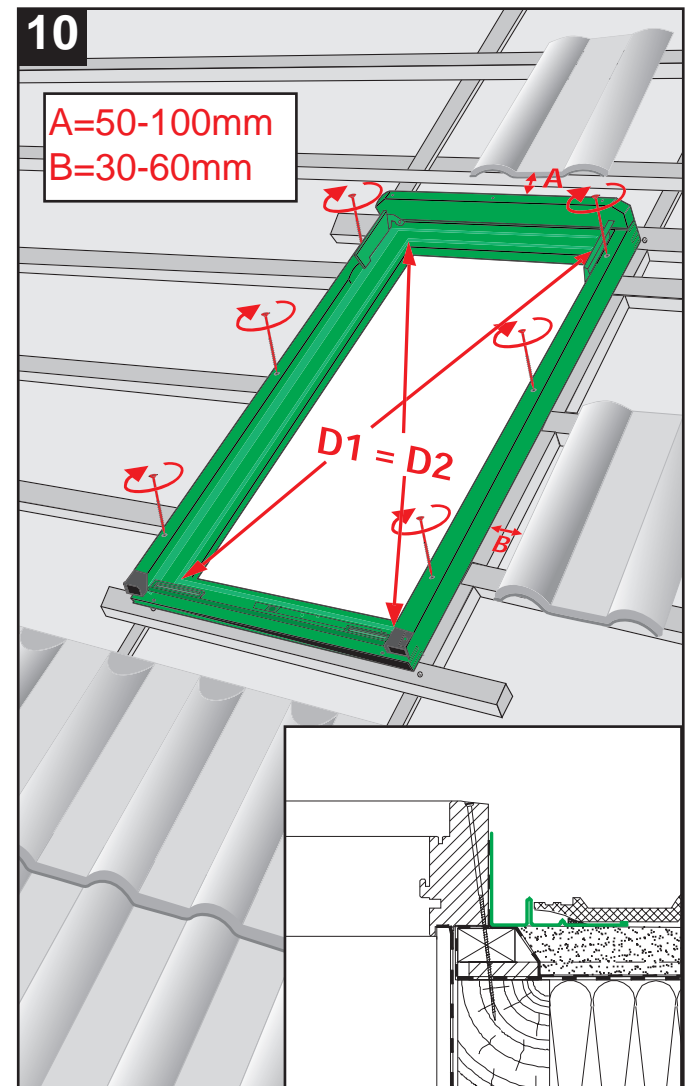
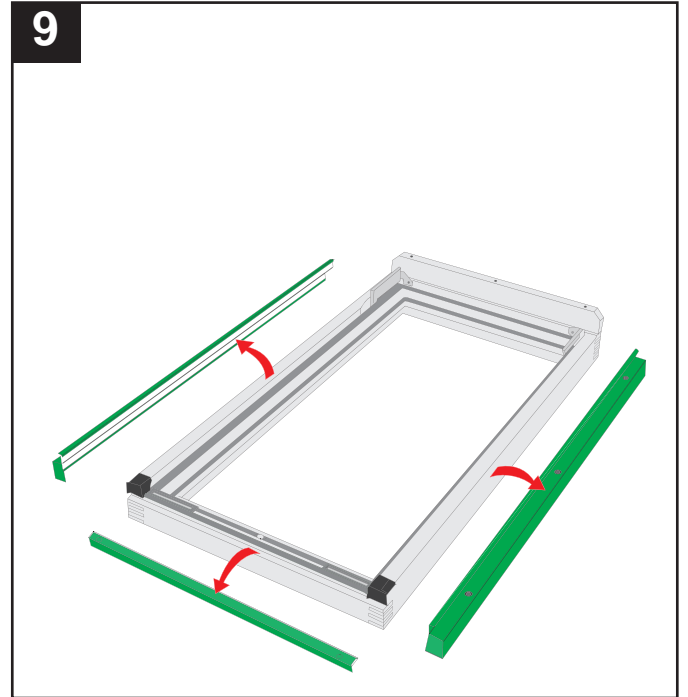
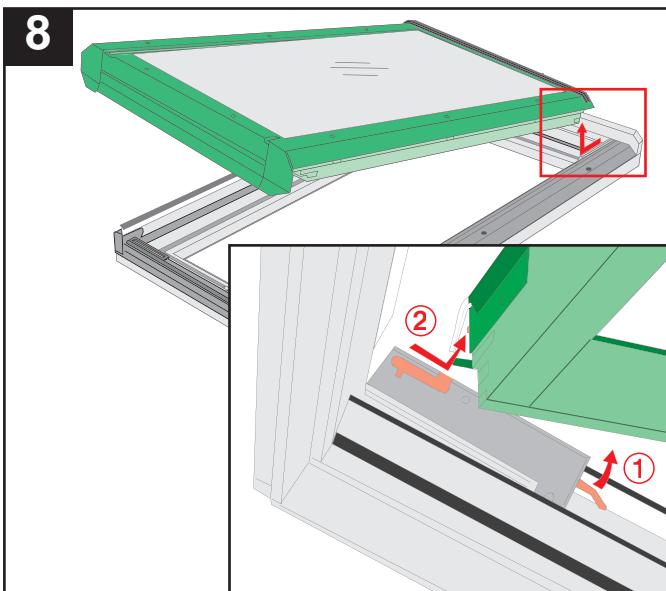
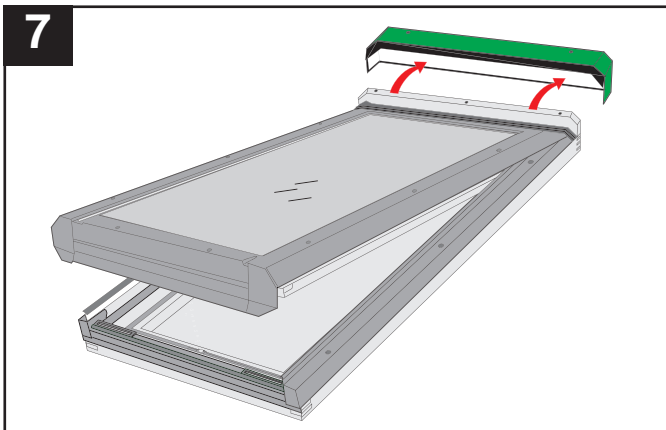
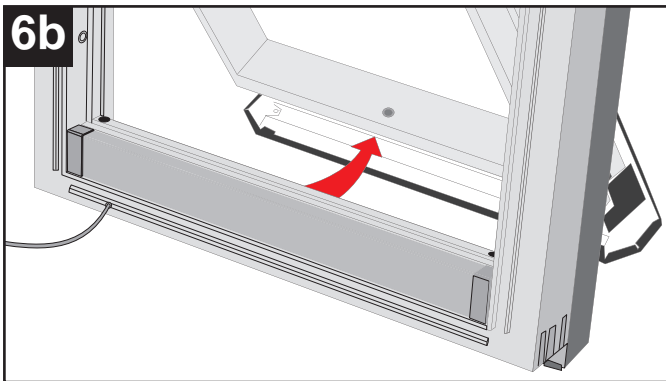
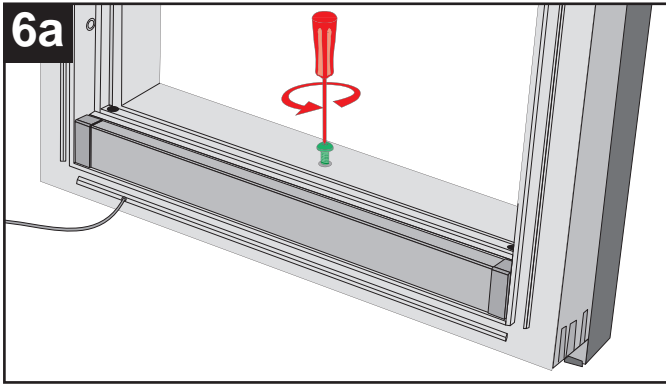


- (D) EINBAUANLEITUNG DES OBERLICHTES FV-E FÜR PROFILIERTE UND FLACHE EINDECKMATERIALIEN
- (E) INSTRUCCIÓN DE MONTAJE DE TRAGALUZ FV-E EN MATERIALES DE CUBIERTA ONDULADOS Y PLANOS
- (F) INSTRUCTION DE MONTAGE DU PUIXS DE LUMIERE FV-E DANS LES COUVERTURES ONDULÉES ET PLATES
- (GB) FV-E INSTALLATION INSTRUCTION FOR PROFILED AND FLAT ROOFING MATERIALS
- (PL) INSTRUKCJA MONTAŻU ŚWIETLIKA FV-E W POKRYCIACH PŁASKICH I FALISTYCH
- (RUS) ИНСТРУКЦИЯ ПО МОНТАЖУ ОКНА FV-E ПРОФИЛИРОВАННОМ И ПЛОСКОМ КРОВЕЛЬНОМ ПОКРЫТИИ.

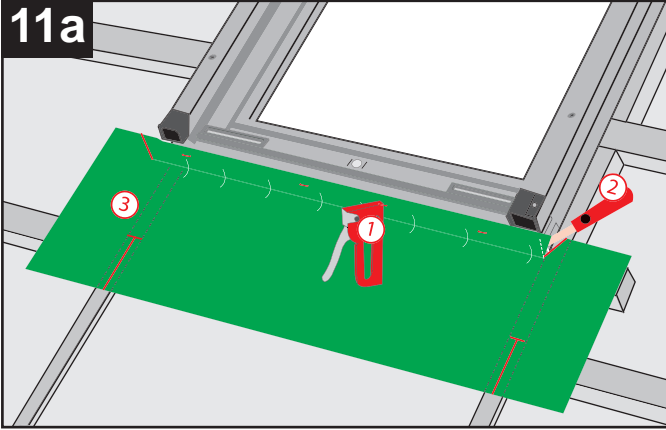
FV-E



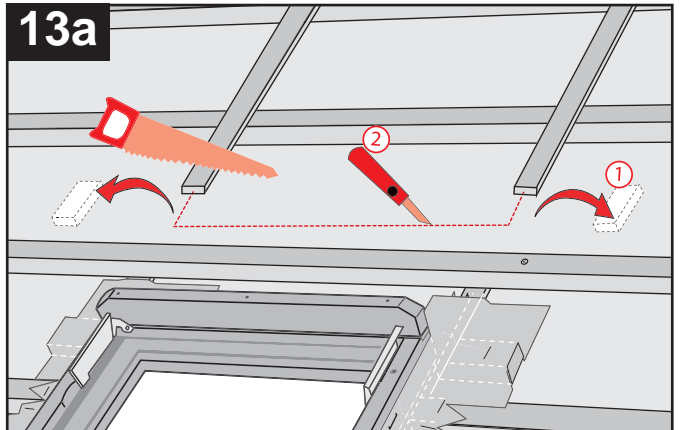




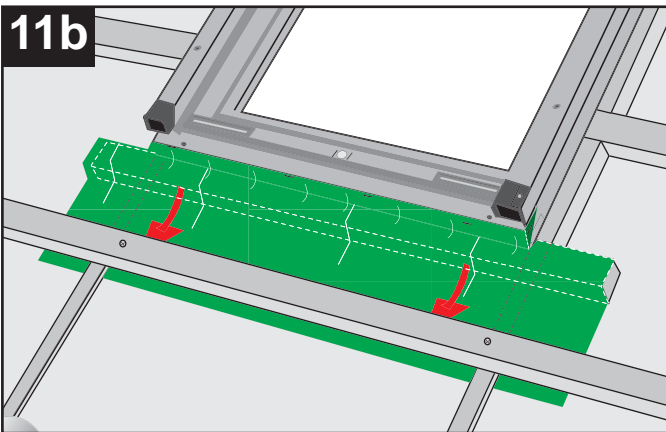
11a



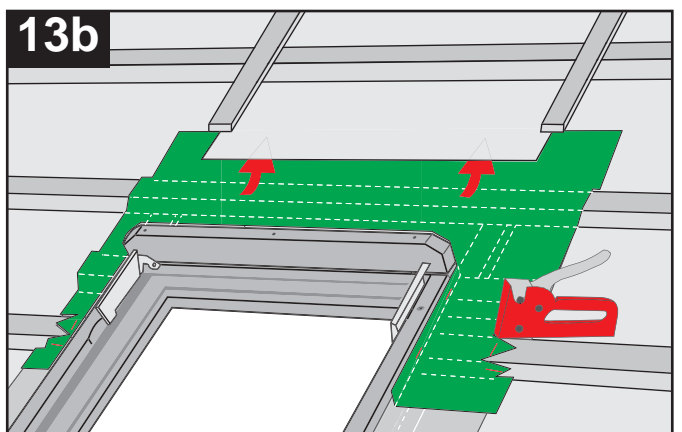
13a



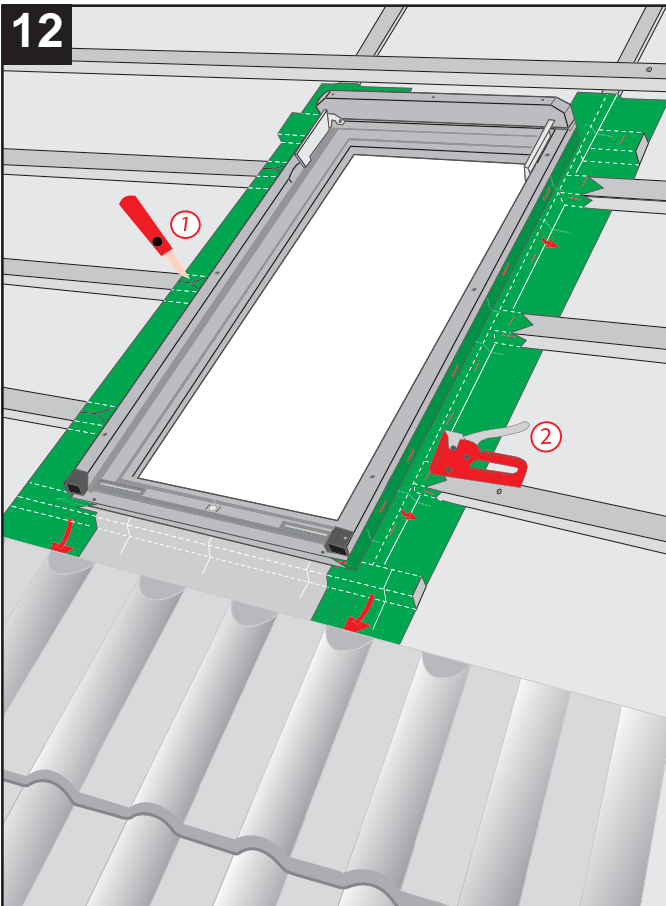
11b



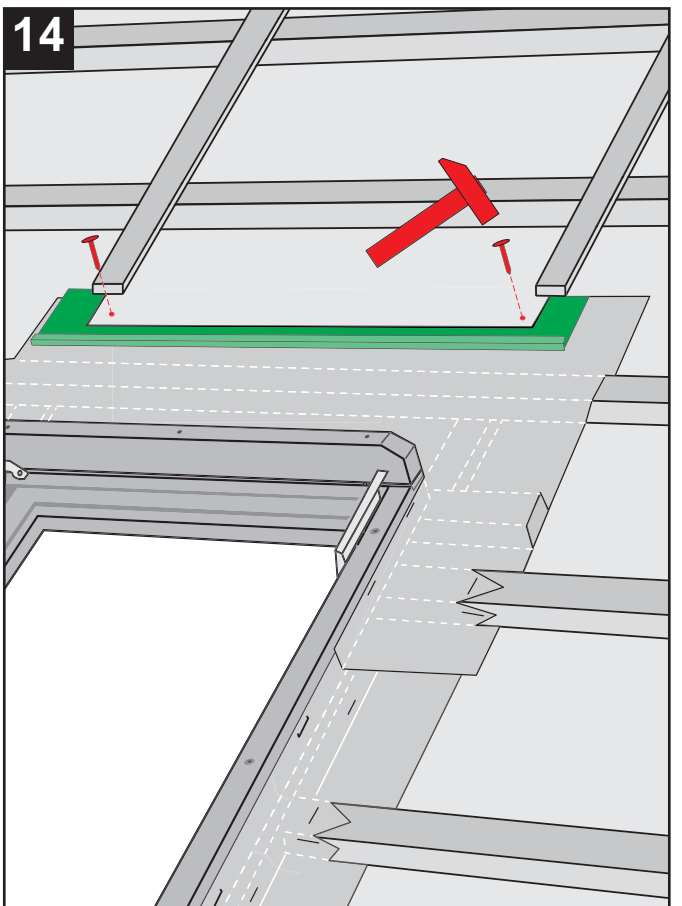
13b



12



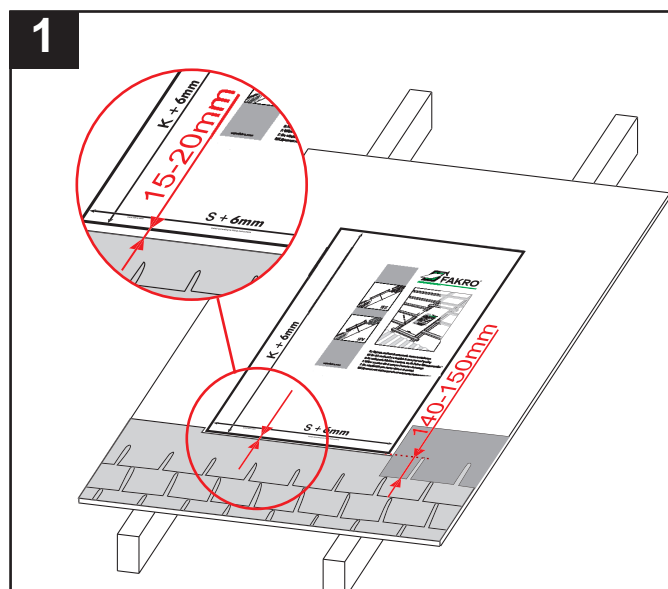
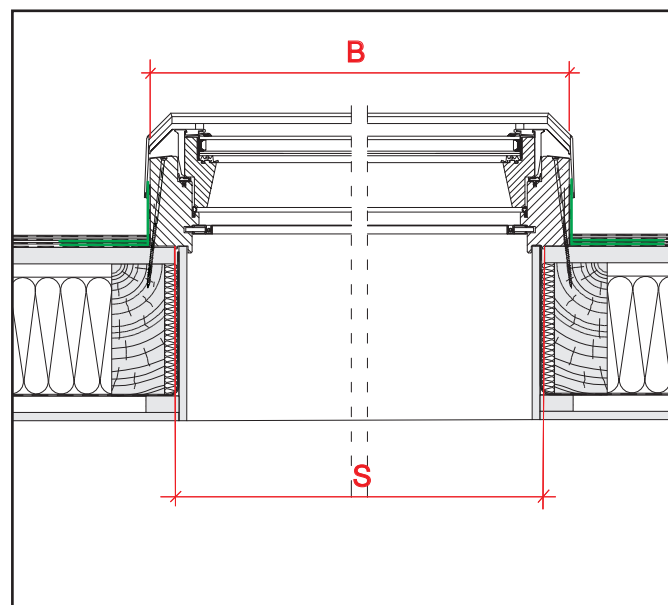
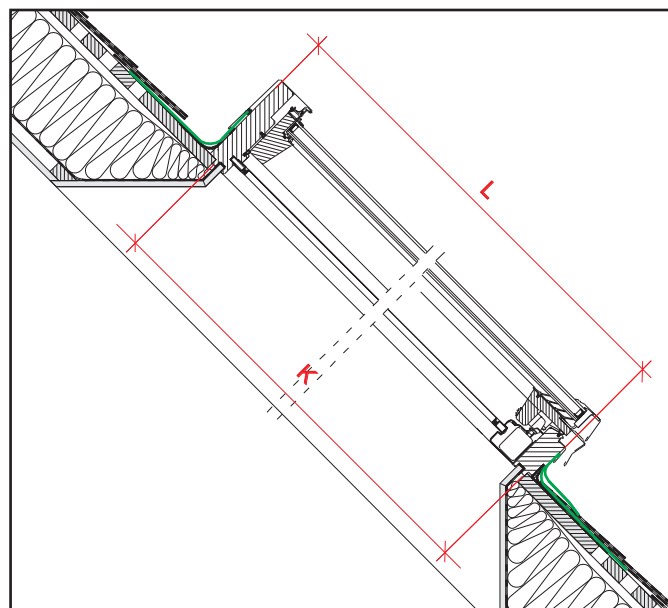
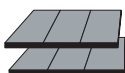
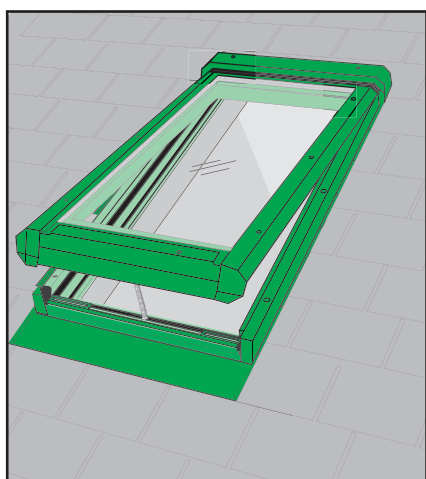
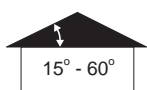
14

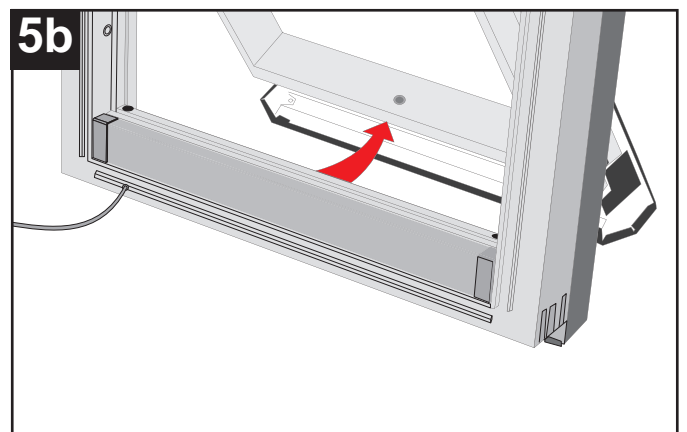
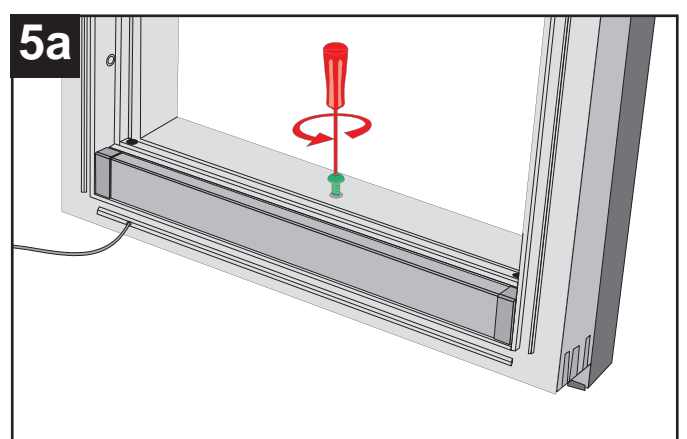
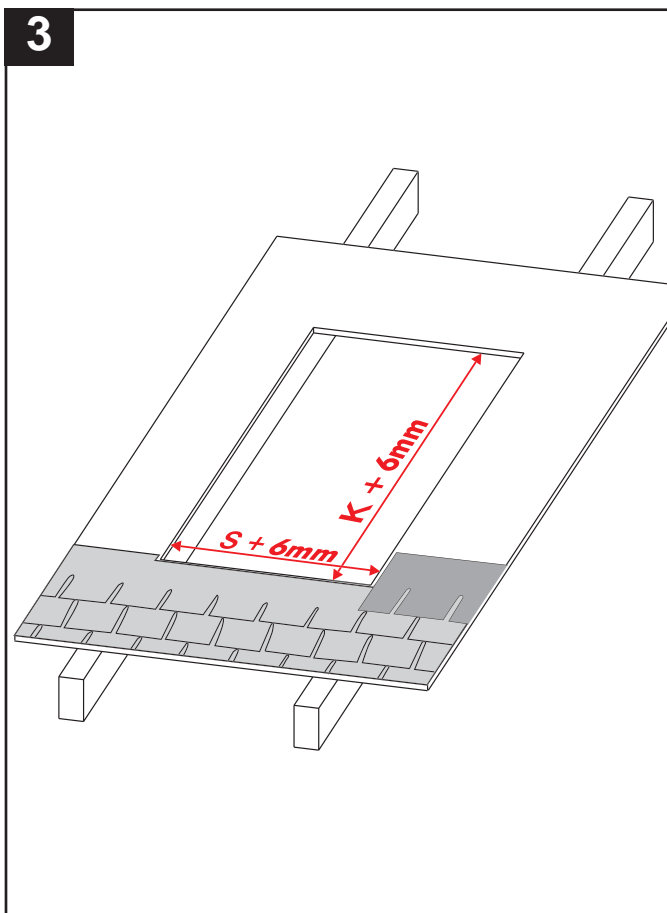
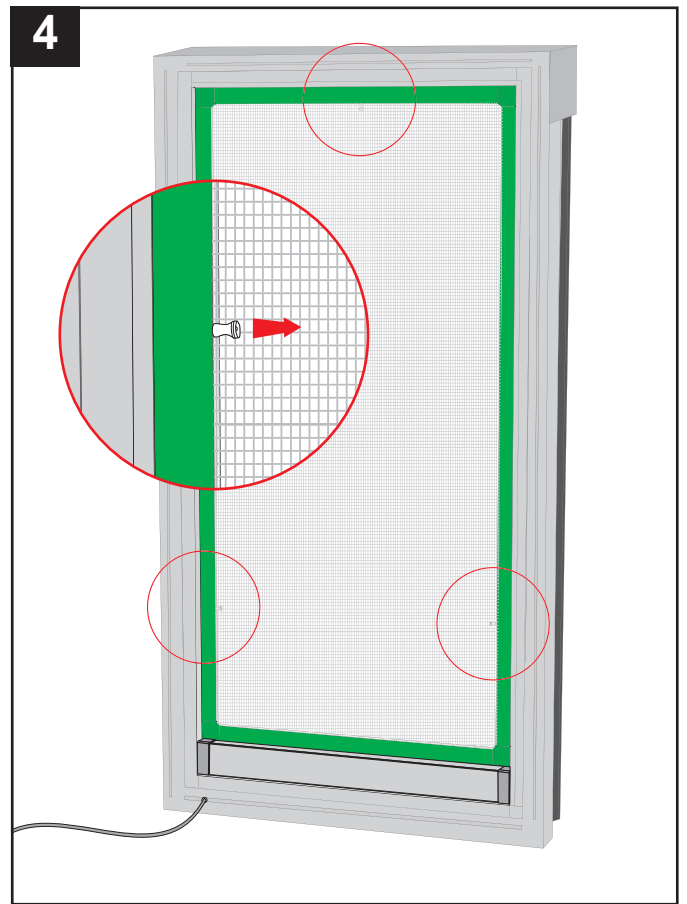
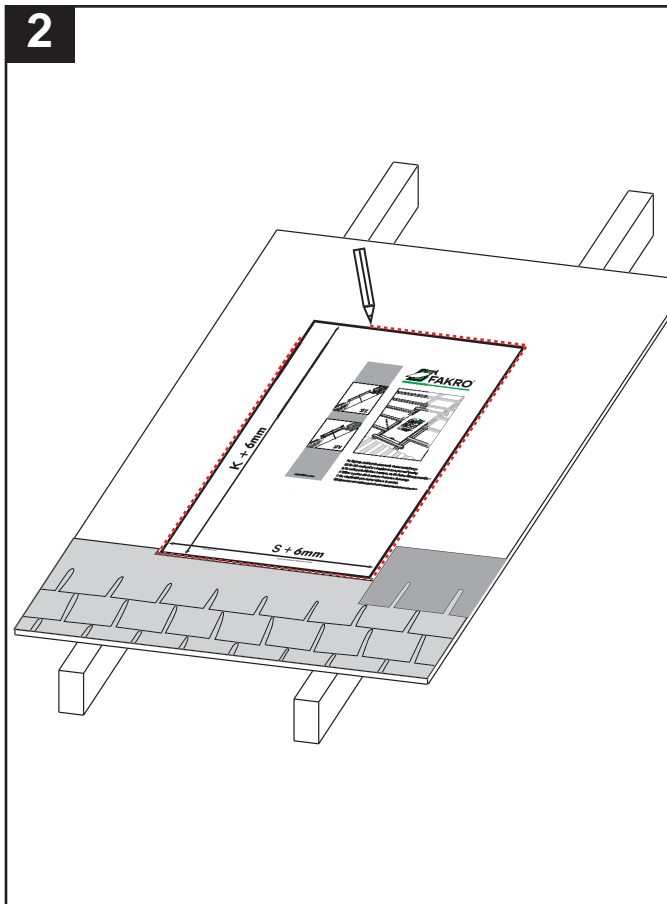




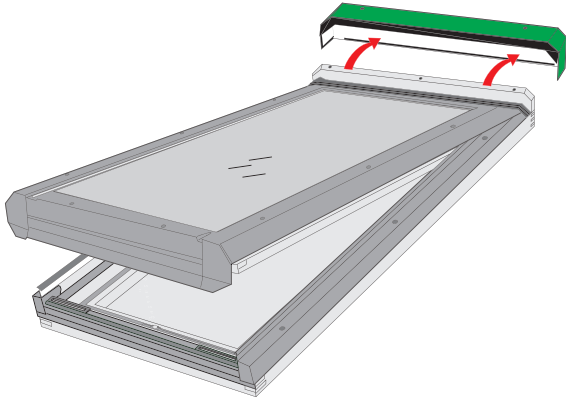
- (D) EINBAUANLEITUNG DES OBERLICHTES FV-E FÜR PROFILIERTE UND FLACHE EINDECKMATERIALIEN
- (E) INSTRUCCIÓN DE MONTAJE DE TRAGALUZ FV-E EN MATERIALES DE CUBIERTA ONDULADOS Y PLANOS
- (F) INSTRUCTION DE MONTAGE DU PUIITS DE LUMIERE FV-E DANS LES COUVERTURES ONDULÉES ET PLATES
- (GB) FV-E INSTALLATION INSTRUCTION FOR PROFILED AND FLAT ROOFING MATERIALS
- (PL) INSTRUKCJA MONTAŻU ŚWIELIKA FV-E W POKRYCIACH PŁASKICH I FALISTYCH
- (RUS) ИНСТРУКЦИЯ ПО МОНТАЖУ ОКНА FV-E ПРОФИЛИРОВАННОМ И ПЛОСКОМ КРОВЕЛЬНОМ ПОКРЫТИИ.

FV-E

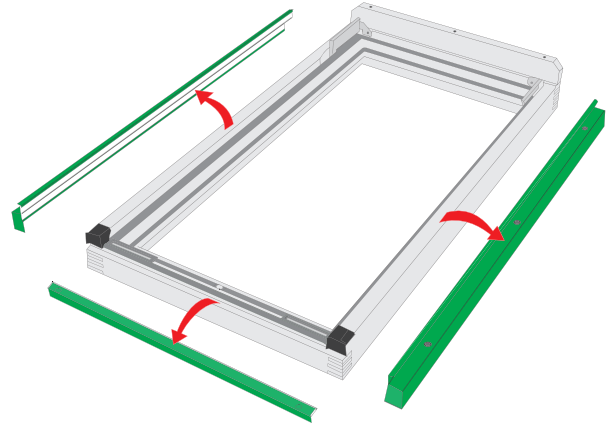




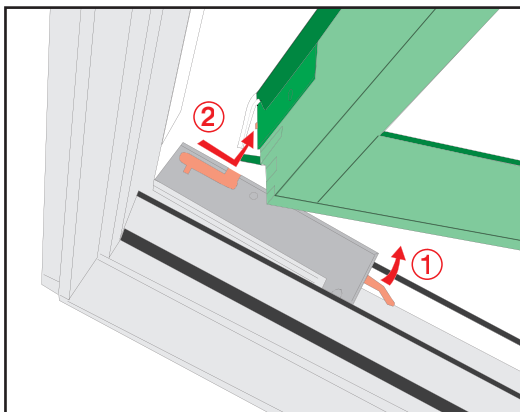
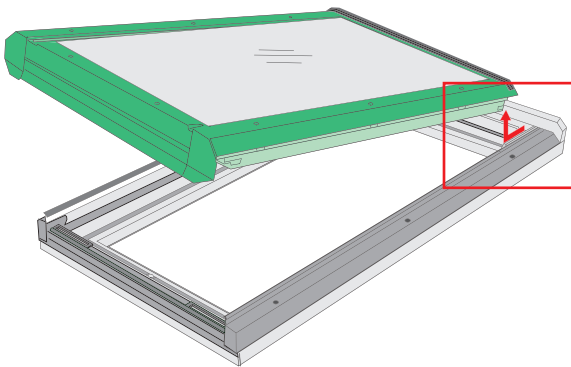
6



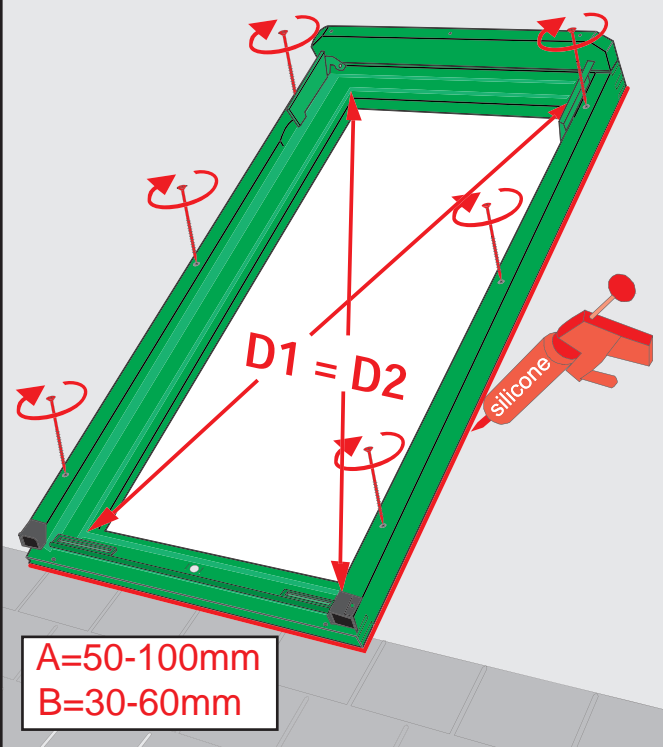
8

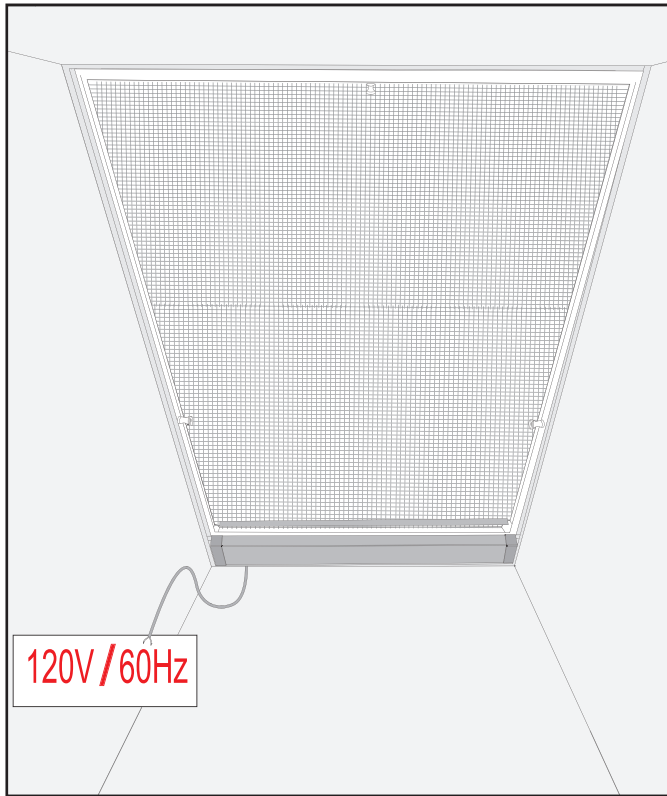


7



9





REMARKS

Please remember:

a junction box is required to connect the cable. A single phase 120V~, 60Hz, branch circuit is required. The branch circuit must be protected by a 15 ampere circuit breaker or time delay fuse.

Make sure, the junction box remains accessible for inspection after the installation is completed. For connection to the branch circuit purposes use only listed junction boxes and nuts.

Please make sure:

- the connection of the cable to the power source is done by a qualified electrical installer,
- electrical installation conforms with the latest edition of the National Electric Code, and all local codes,
- the skylight is connected to a grounded, metallic and permanent wiring system, or a grounding connector is connected to the grounding terminal or wire lead on the skylight,
- the power is switched off when connecting the skylight, installing accessories, and at any time the cover of the electric elements is removed,
- to call for a service when operator does not work properly,
- children will not be able to play with the skylight (keep the remote away from children).

Danger of Electrical Shock:

- skylight's operator is a class I product,
- electrical ground is required,
- lack of proper grounding can result in electrical shock,
- disconnect power of the skylight before servicing,
- do not have a fuse in the neutr and grounding circuit.